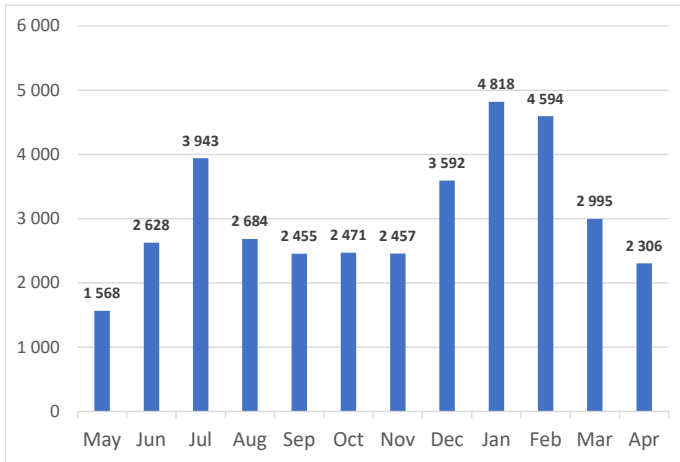


Net Sales Total

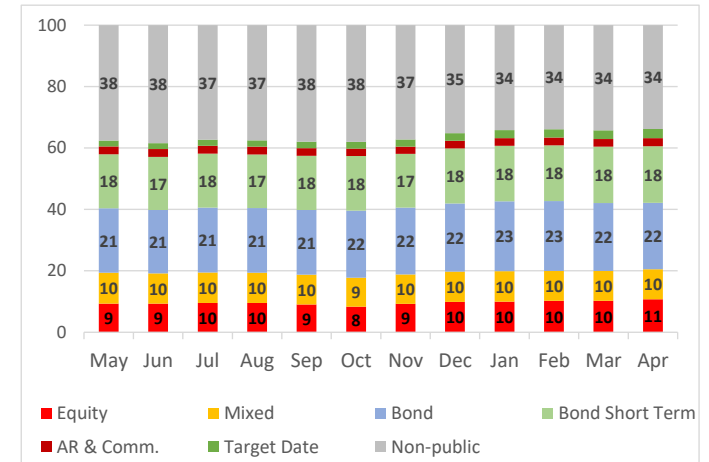


AUM & Net Sales by Investment Profile

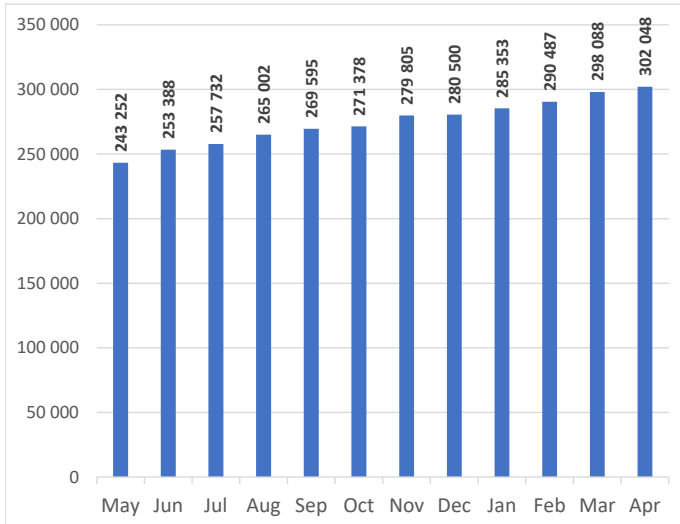
Profile	AUM		Net sales		
	Apr-21	Mar-21	Apr-21	Mar-21	YTD
Equity	32 415	30 618	858	490	2 668
Mixed	29 701	28 852	532	315	1 859
Bond	65 204	66 012	-764	-82	2 887
Bond Short Term	55 643	54 590	999	1 678	4 922
Absolute Return	6 184	6 074	168	98	541
Commodity	1 818	1 495	89	57	223
Target Date PPK	3 690	3 273	343	405	1 216
Target Date Other	5 318	5 177	109	103	505
Non-public	102 075	101 997	-28	-69	-109
Total	302 048	298 088	2 306	2 995	14 712

AUM Structure [%]	Private Eq.	Securitized	Real Estate
of Non-public category	95	5	1

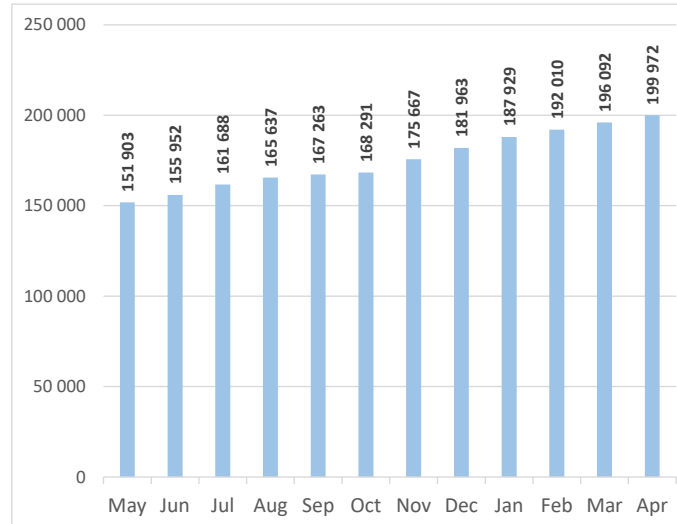
AUM Structure [%]



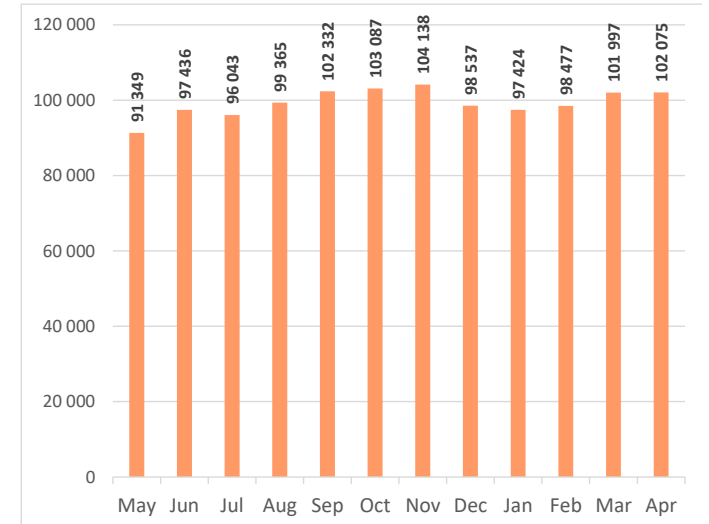
AUM Total



Capital market funds AUM



Non-public funds AUM

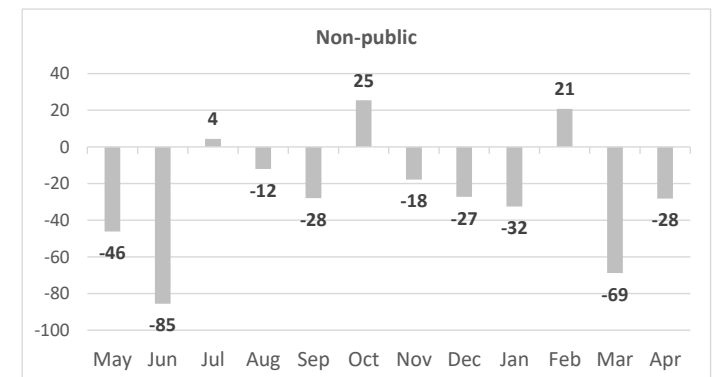
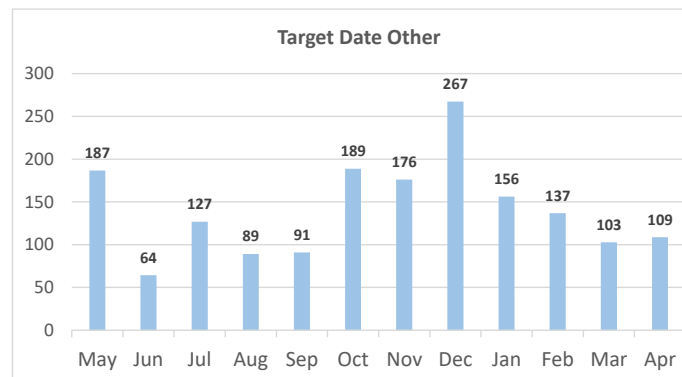
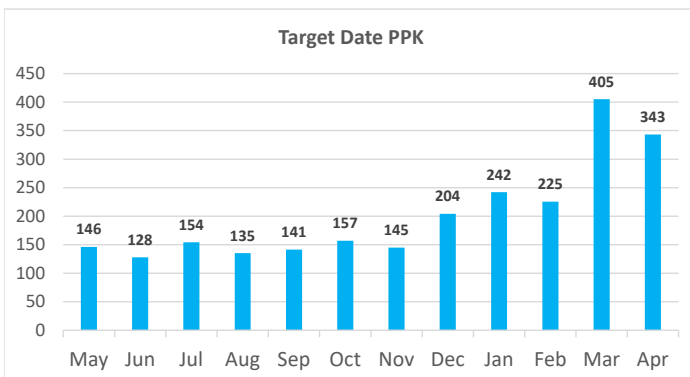
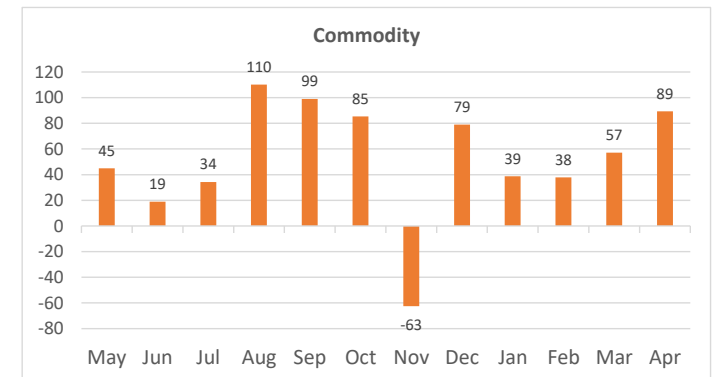
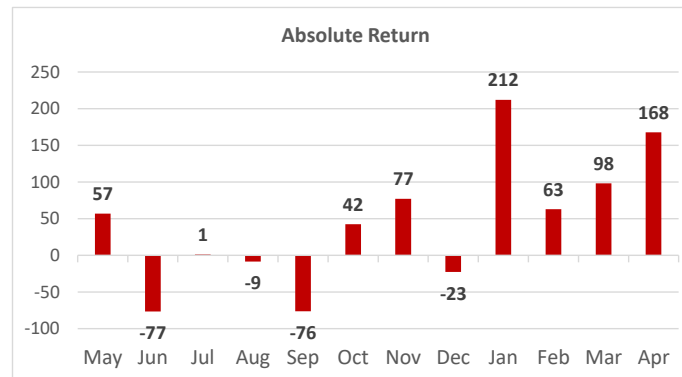
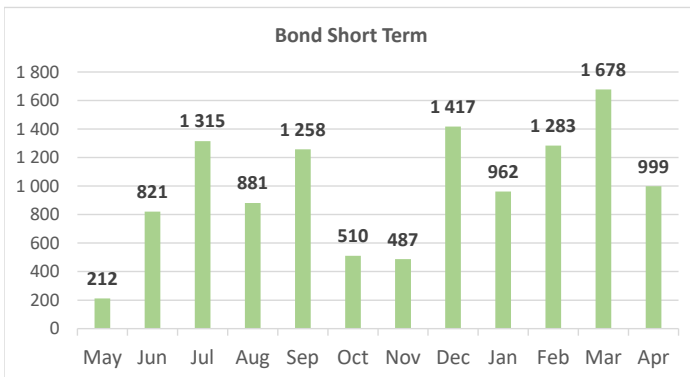
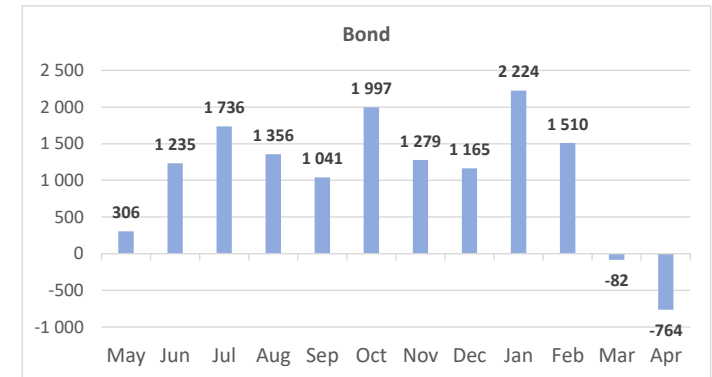
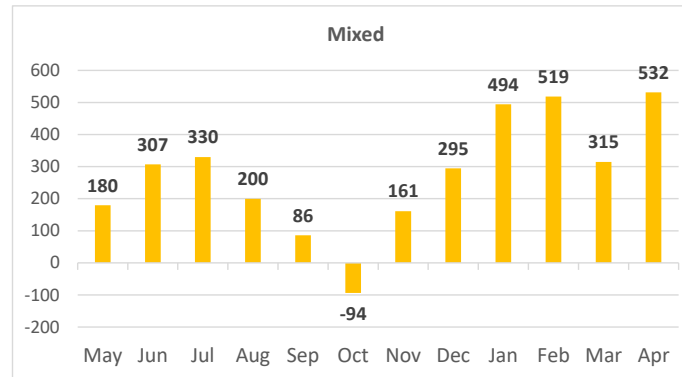
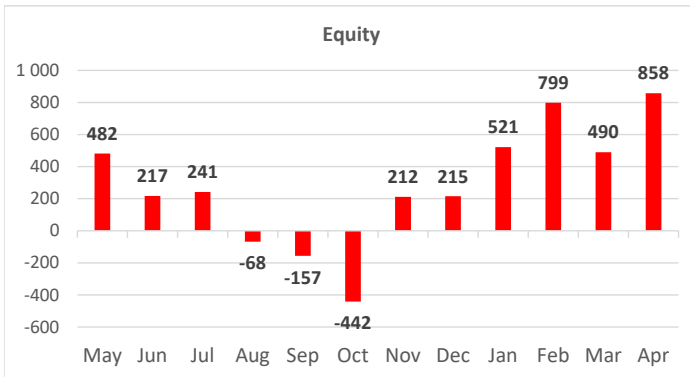


All data in PLN mln

Non-public category contains data for Private Equity, Securitized and Real Estate

This Factsheet has been developed by IZFiA, based on data collected from domestic Investment Funds (approx. 95% of Polish investment fund assets); www.izfa.pl

Net Sales by Investment Profile



All data in PLN mln

Non-public category contains data for Private Equity, Securitized and Real Estate

This FactSheet has been developed by IZFiA, based on data collected from domestic Investment Funds (approx. 95% of Polish investment fund assets); www.izfa.pl