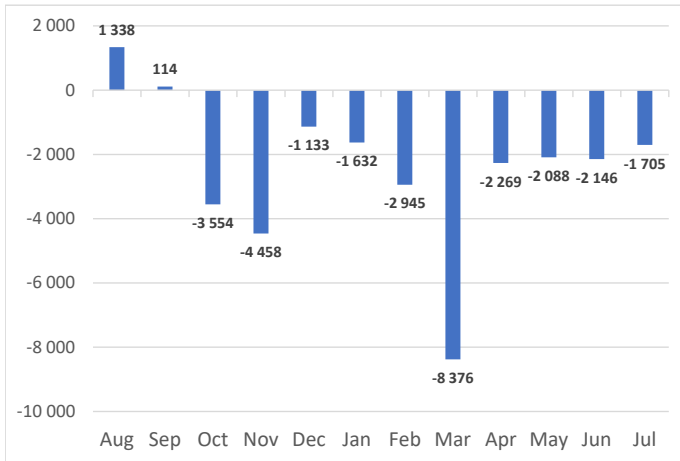


Net Sales Total

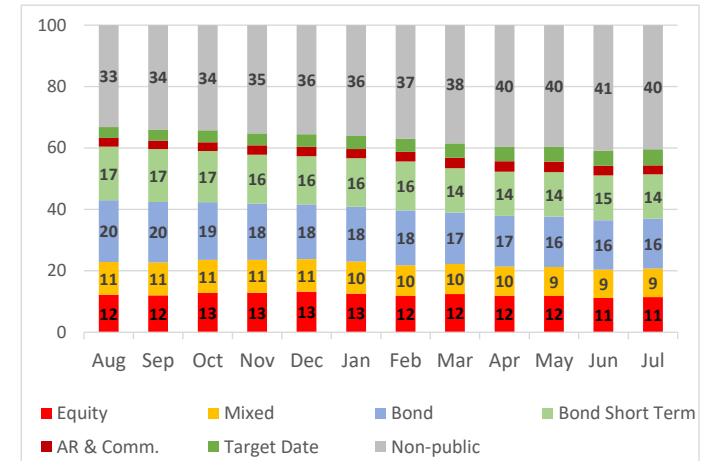


AUM & Net Sales by Investment Profile

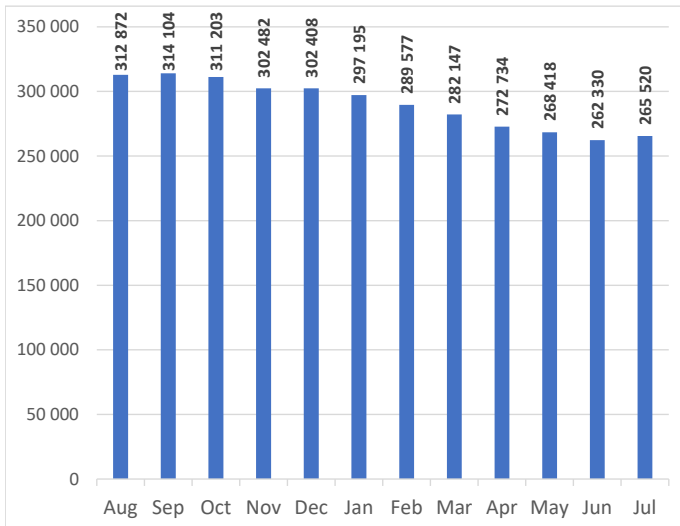
Profile	AUM		Net sales		
	Jul-22	Jun-22	Jul-22	Jun-22	YTD
Equity	30 341	29 299	-388	-292	-2 217
Mixed	24 804	24 123	-267	-349	-3 936
Bond	43 228	42 307	-493	-1 087	-8 771
Bond Short Term	38 133	38 199	-487	-490	-8 287
Absolute Return	4 901	4 965	-71	-96	-832
Commodity	2 972	3 331	-341	-119	210
Target Date PPK	8 385	7 704	324	323	2 710
Target Date Other	5 516	5 220	15	0	-87
Non-public	107 241	107 182	1	-36	48
Total	265 520	262 330	-1 705	-2 146	-21 161

AUM Structure [%]	Private Eq.	Securitized	Real Estate
of Non-public category	96	4	0

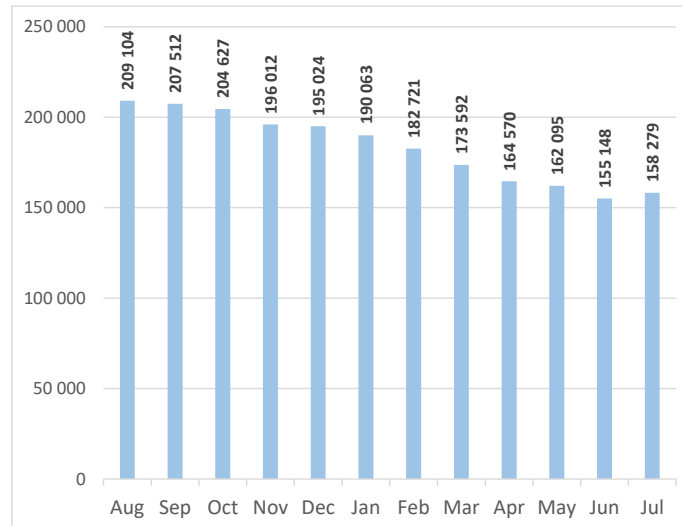
AUM Structure [%]



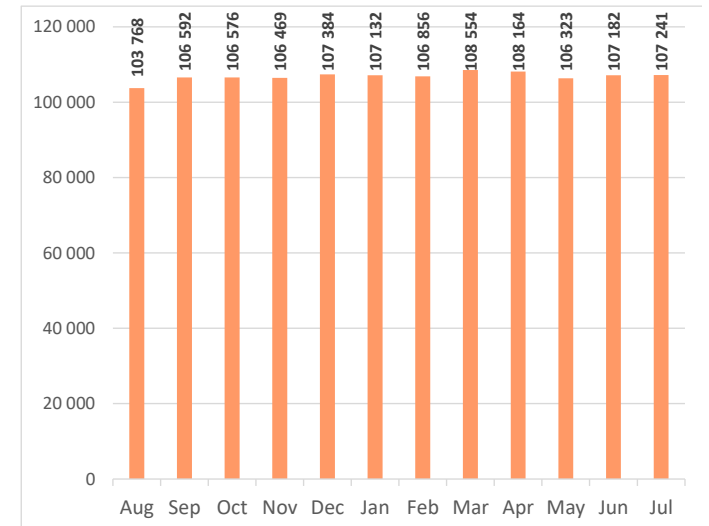
AUM Total



Capital market funds AUM



Non-public funds AUM

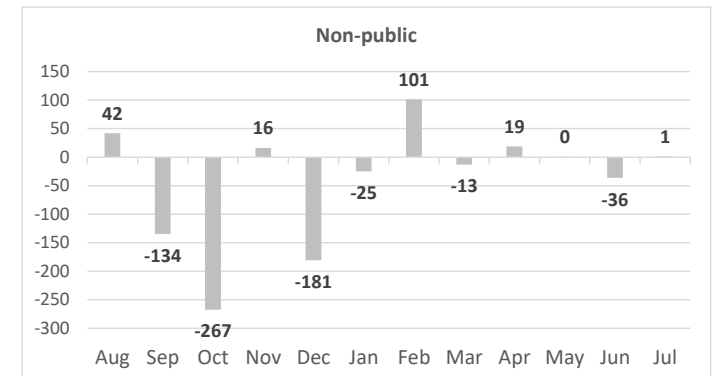
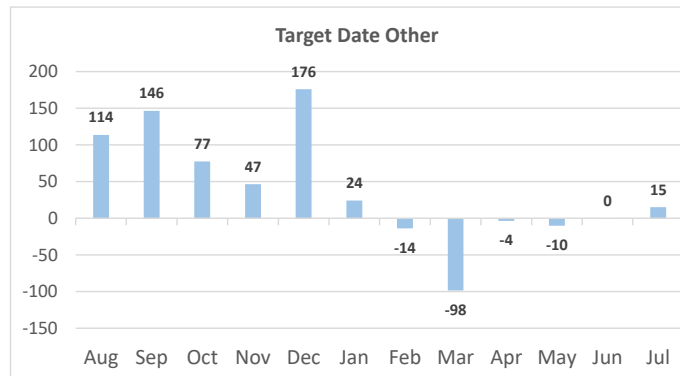
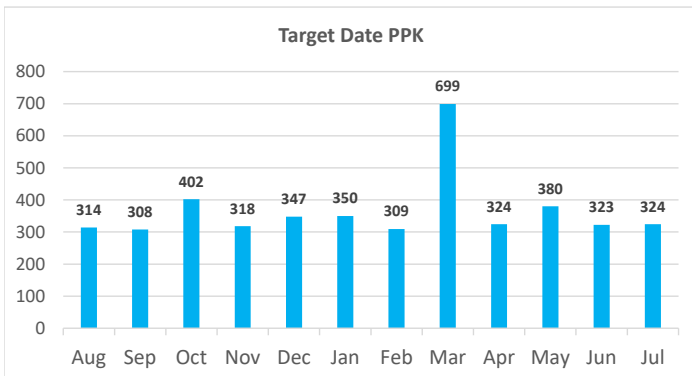
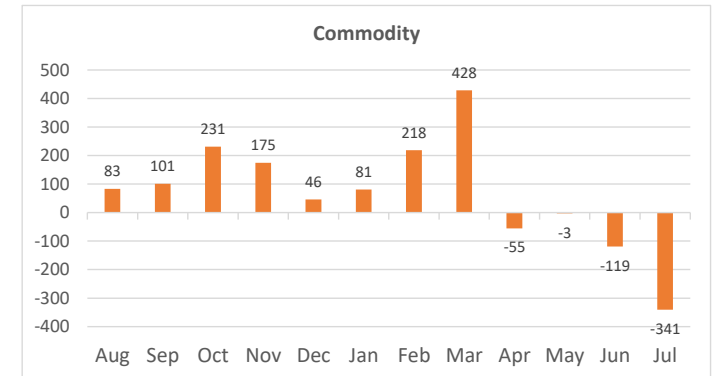
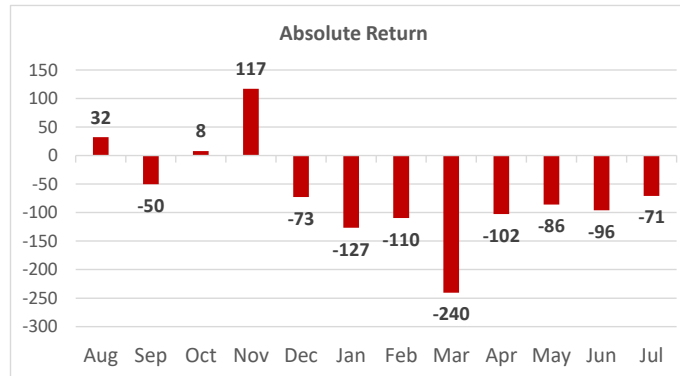
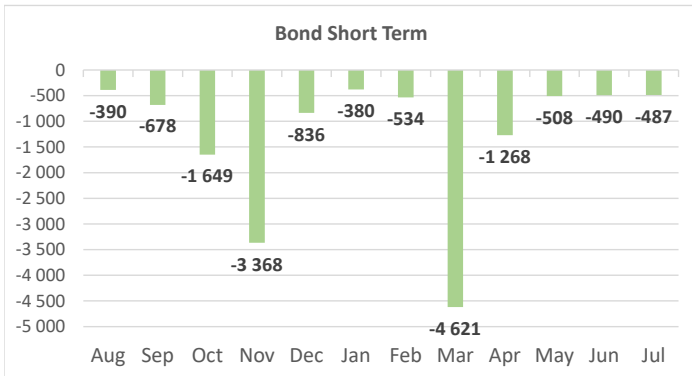
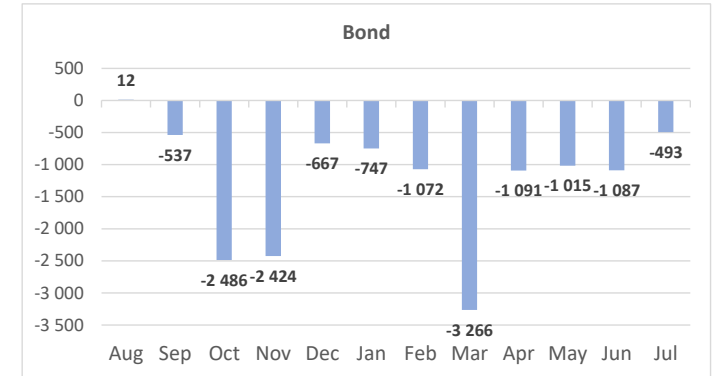
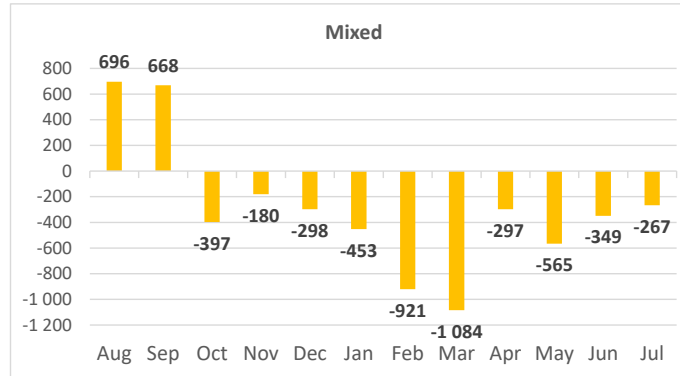
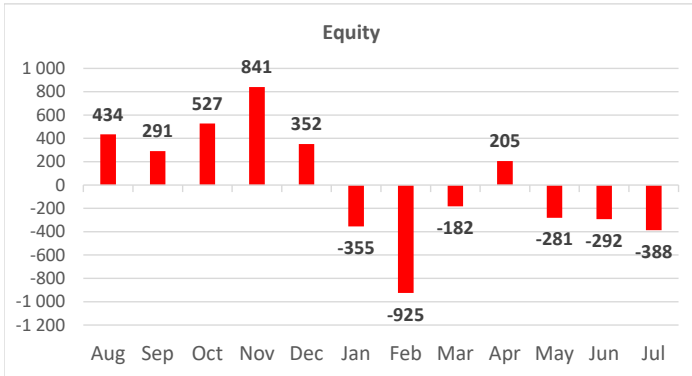


All data in PLN mln

Non-public category contains data for Private Equity, Securitized and Real Estate

This FactSheet has been developed by IZFiA, based on data collected from domestic Investment Funds (approx. 95% of Polish investment fund assets); www.izfa.pl

Net Sales by Investment Profile



All data in PLN mln

Non-public category contains data for Private Equity, Securitized and Real Estate

This Factsheet has been developed by IZFiA, based on data collected from domestic Investment Funds (approx. 95% of Polish investment fund assets); www.izfa.pl