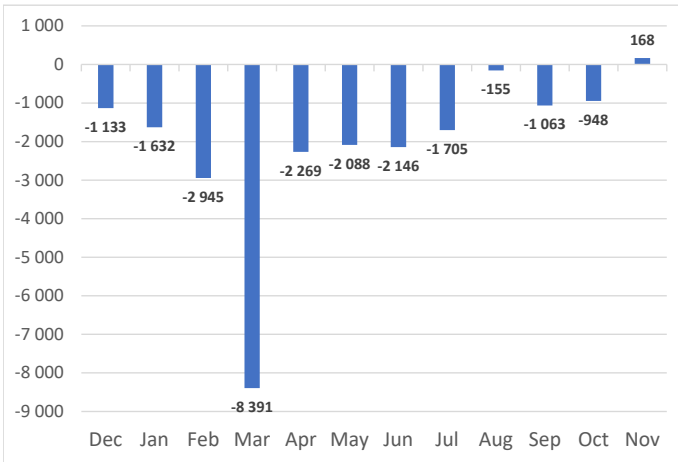


Net Sales Total

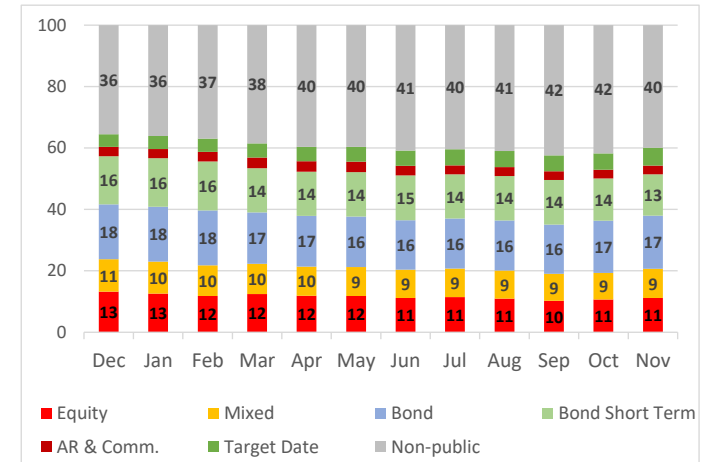


AUM & Net Sales by Investment Profile

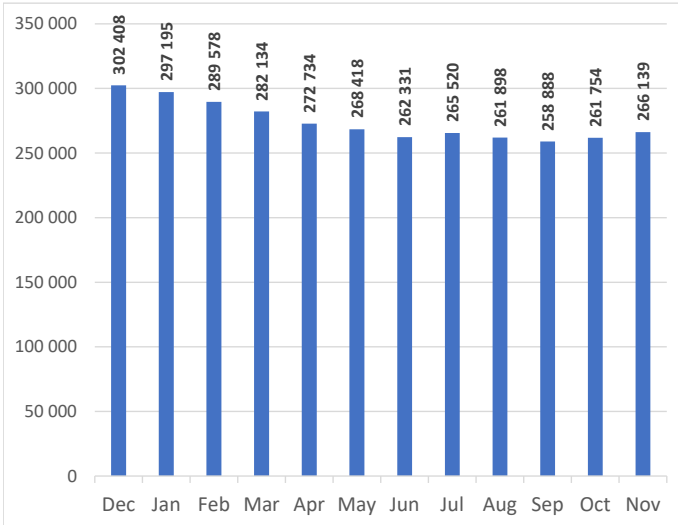
Profile	AUM		Net sales		
	Nov-22	Oct-22	Nov-22	Oct-22	YTD
Equity	29 815	27 917	-34	-136	-2 615
Mixed	25 178	22 610	1 131	-274	-3 297
Bond	46 002	44 589	-346	608	-9 063
Bond Short Term	35 888	36 059	-846	-990	-10 855
Absolute Return	4 826	4 754	-30	-31	-992
Commodity	2 771	2 601	-36	-76	-31
Target Date PPK	9 868	8 828	338	359	4 107
Target Date Other	5 562	5 173	53	16	48
Non-public	106 229	109 223	-60	-424	-475
Total	266 139	261 754	168	-948	-23 174

AUM Structure [%]	Private Eq.	Securitized	Real Estate
of Non-public category	96	4	0

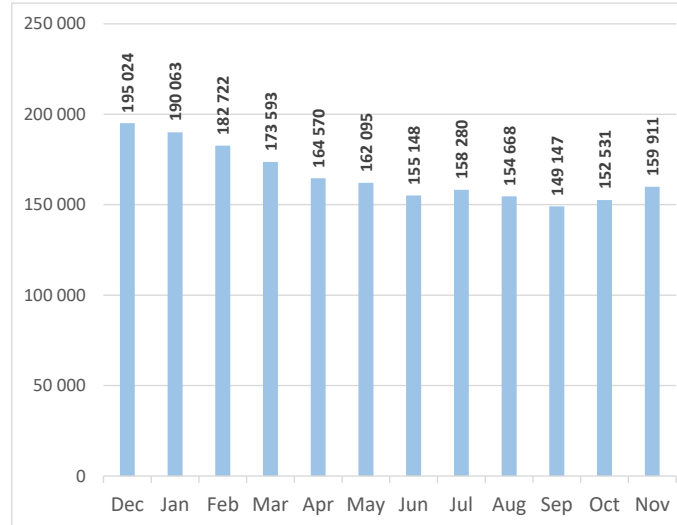
AUM Structure [%]



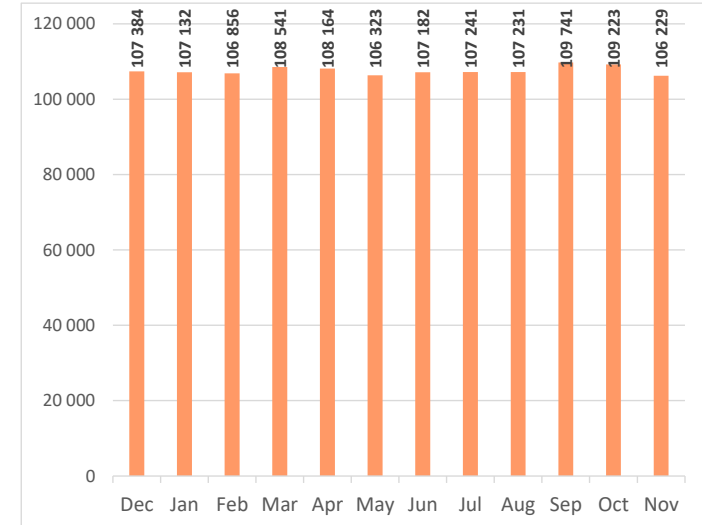
AUM Total



Capital market funds AUM



Non-public funds AUM

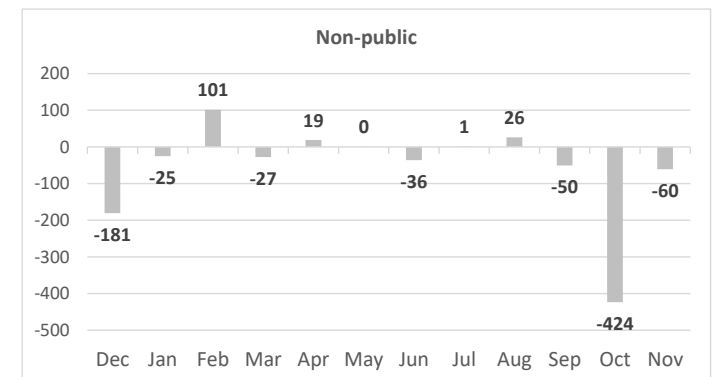
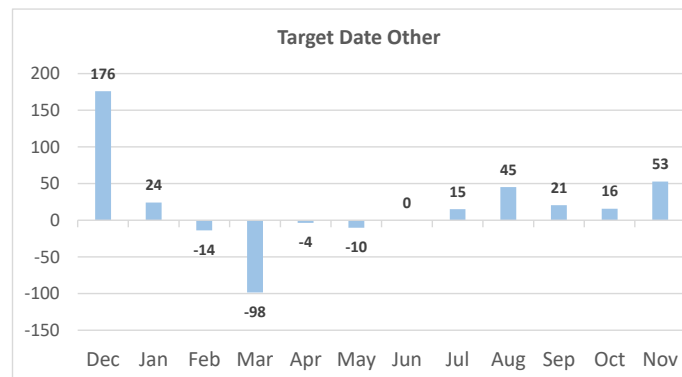
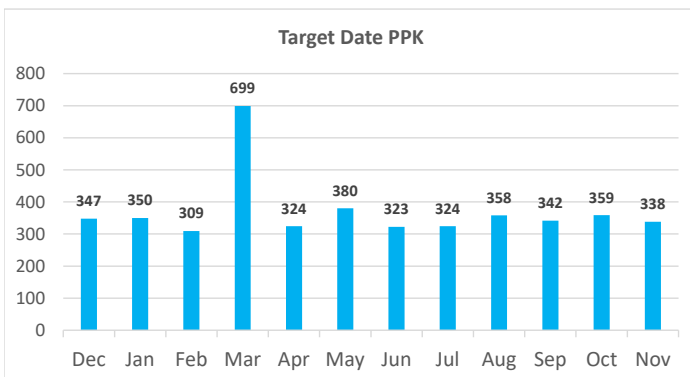
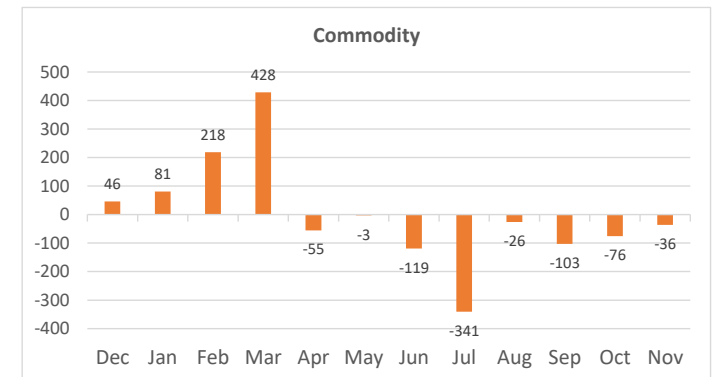
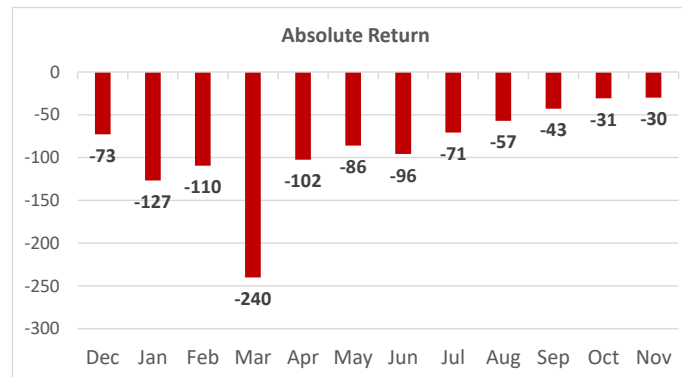
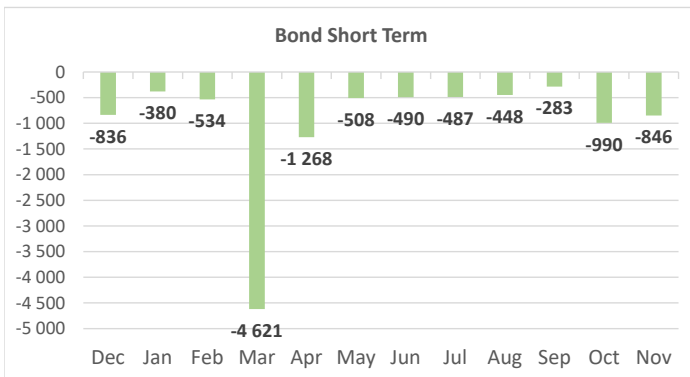
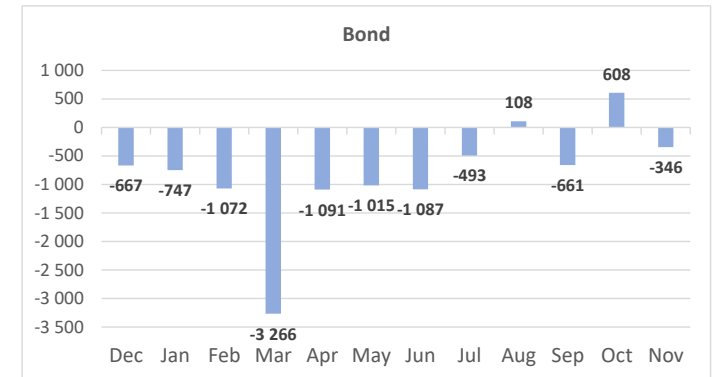
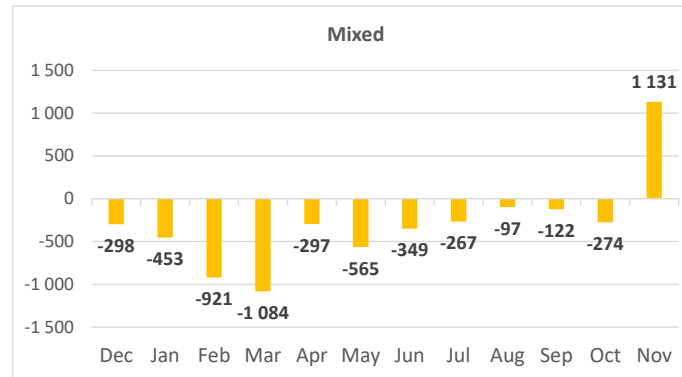
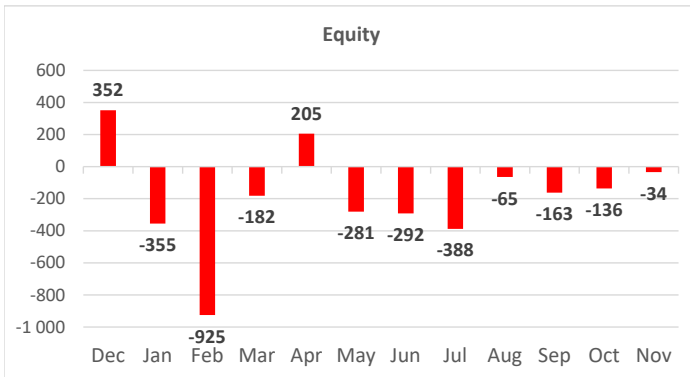


All data in PLN mln

Non-public category contains data for Private Equity, Securitized and Real Estate

This FactSheet has been developed by IZFiA, based on data collected from domestic Investment Funds (approx. 95% of Polish investment fund assets); www.izfa.pl

Net Sales by Investment Profile



All data in PLN mln

Non-public category contains data for Private Equity, Securitized and Real Estate

This FactSheet has been developed by IZFiA, based on data collected from domestic Investment Funds (approx. 95% of Polish investment fund assets); www.izfa.pl