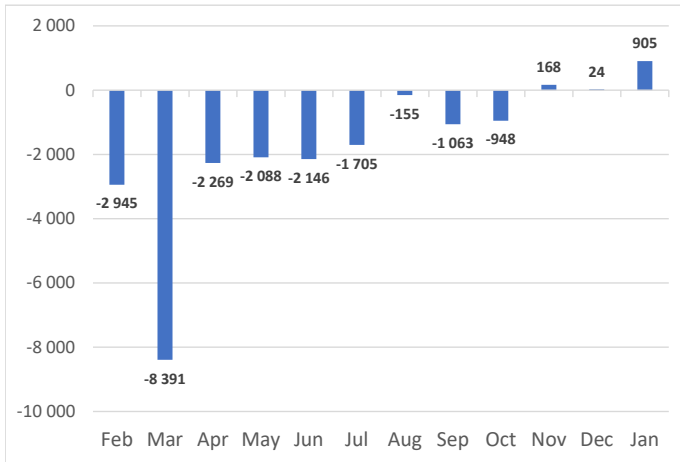


Net Sales Total

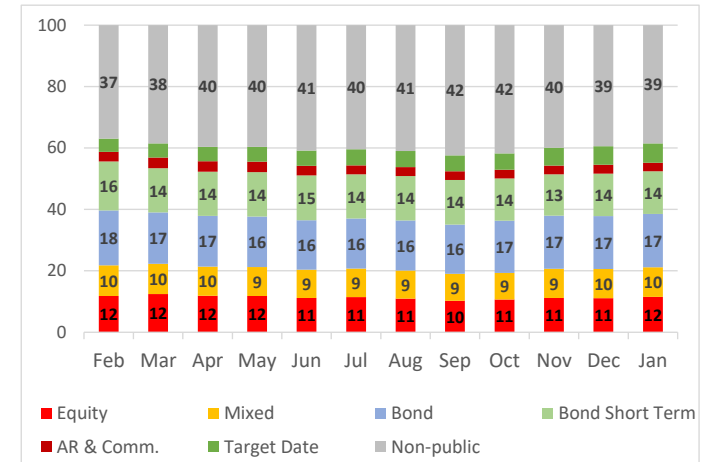


AUM & Net Sales by Investment Profile

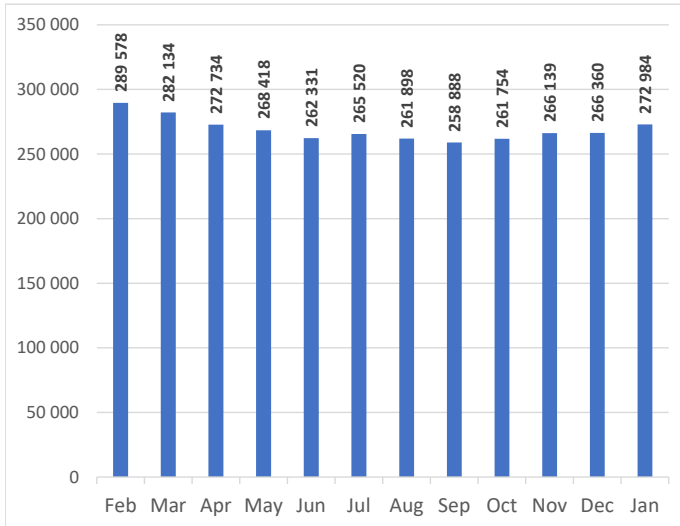
Profile	AUM		Net sales		
	Jan-23	Dec-22	Jan-23	Dec-22	YTD
Equity	31 416	29 524	-2	20	-2
Mixed	26 457	25 399	22	-22	22
Bond	47 273	45 817	165	-206	165
Bond Short Term	37 900	36 906	403	-161	403
Absolute Return	4 732	4 866	-10	-90	-10
Commodity	2 813	2 768	-72	-29	-72
Target Date PPK	11 227	10 325	359	388	359
Target Date Other	6 047	5 749	46	175	46
Non-public	105 119	105 005	-7	-51	-7
Total	272 984	266 360	905	24	905

AUM Structure [%]	Private Eq.	Securitized	Real Estate
of Non-public category	95	4	0

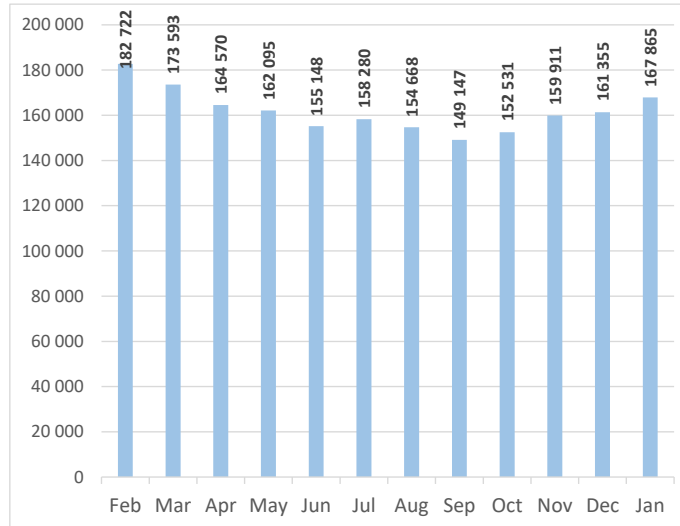
AUM Structure [%]



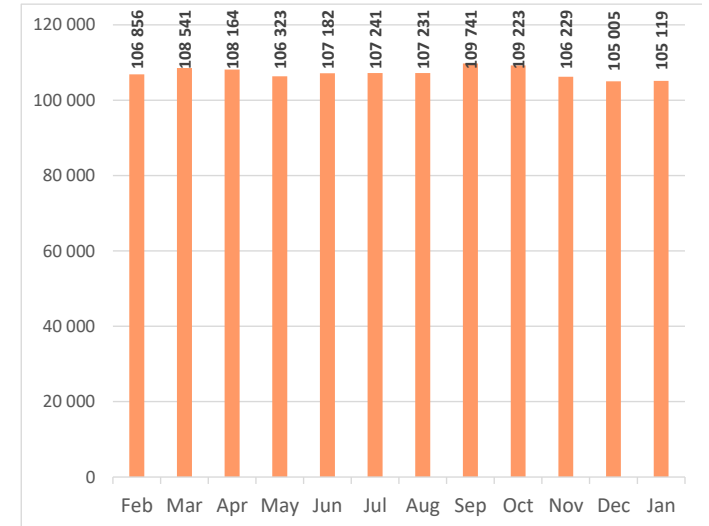
AUM Total



Capital market funds AUM



Non-public funds AUM

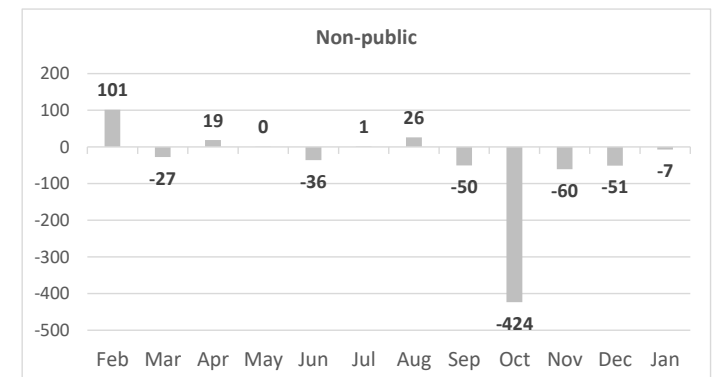
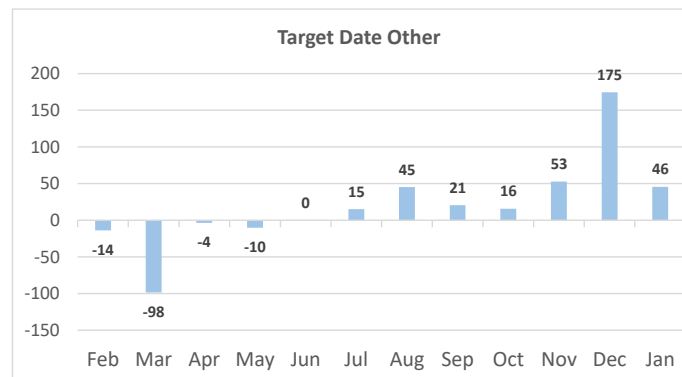
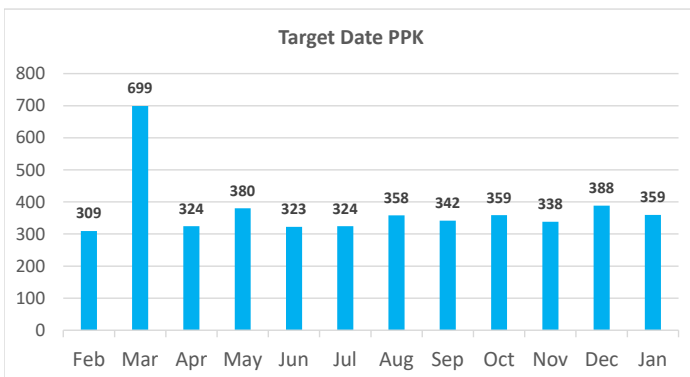
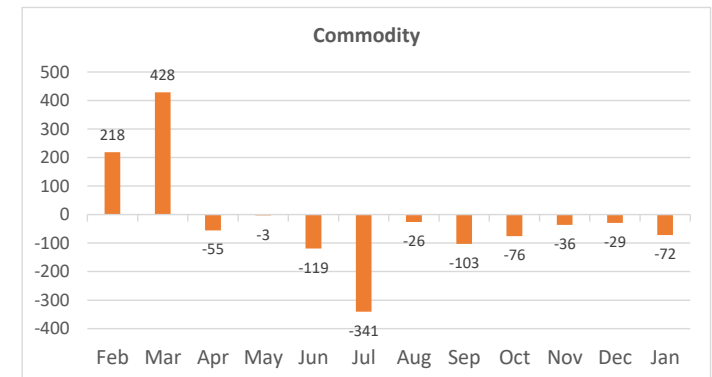
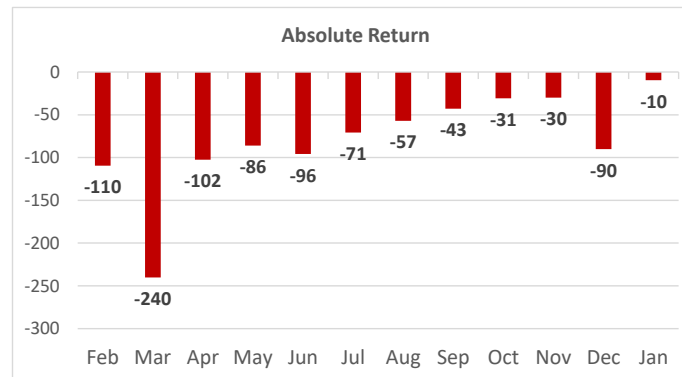
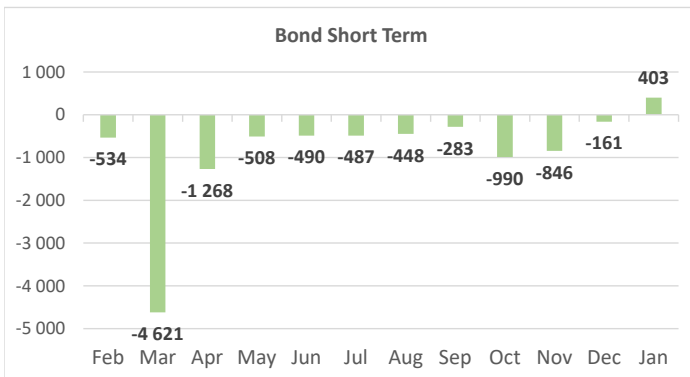
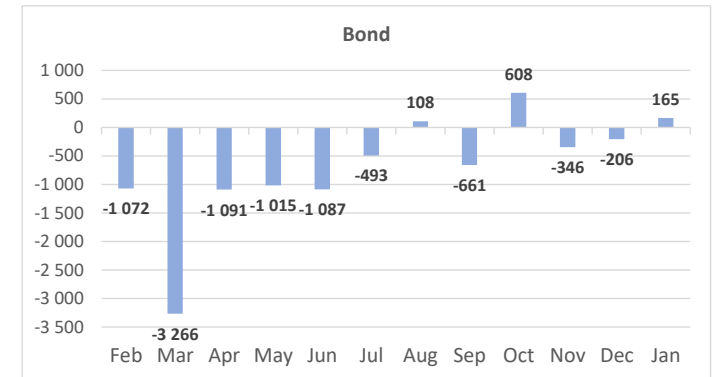
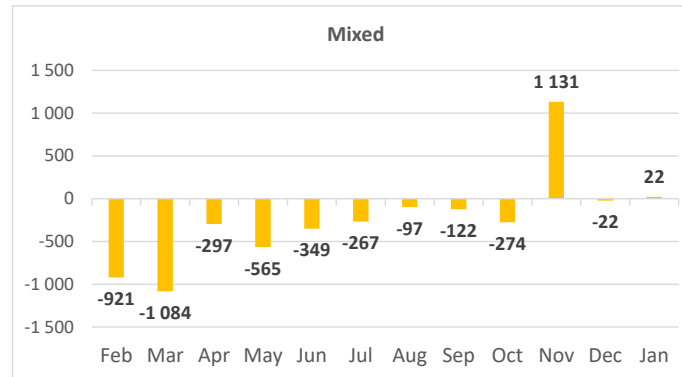
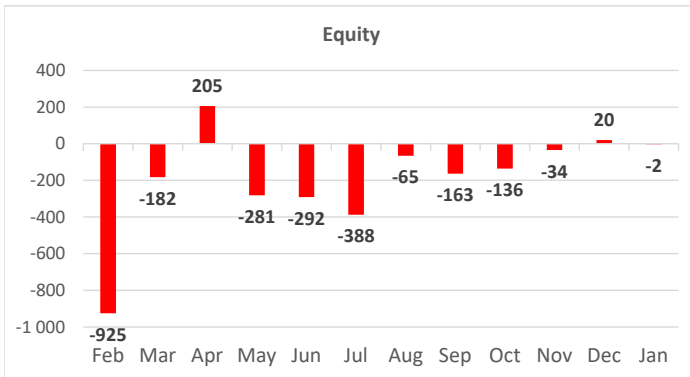


All data in PLN mln

Non-public category contains data for Private Equity, Securitized and Real Estate

This FactSheet has been developed by IZFiA, based on data collected from domestic Investment Funds (approx. 95% of Polish investment fund assets); www.izfa.pl

Net Sales by Investment Profile



All data in PLN mln

Non-public category contains data for Private Equity, Securitized and Real Estate

This FactSheet has been developed by IZFiA, based on data collected from domestic Investment Funds (approx. 95% of Polish investment fund assets); www.izfa.pl