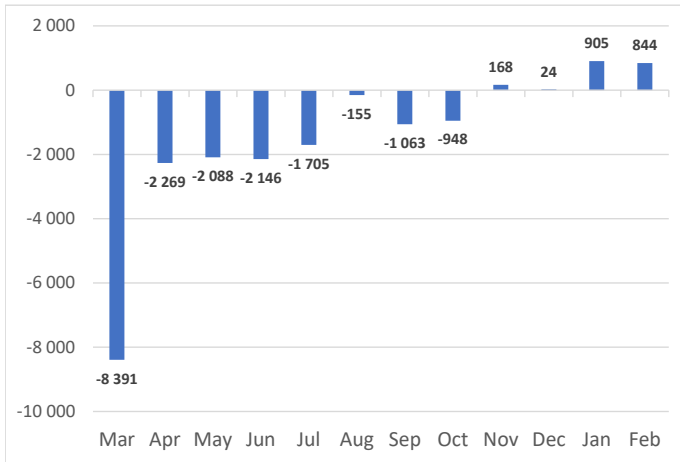


**Net Sales Total**

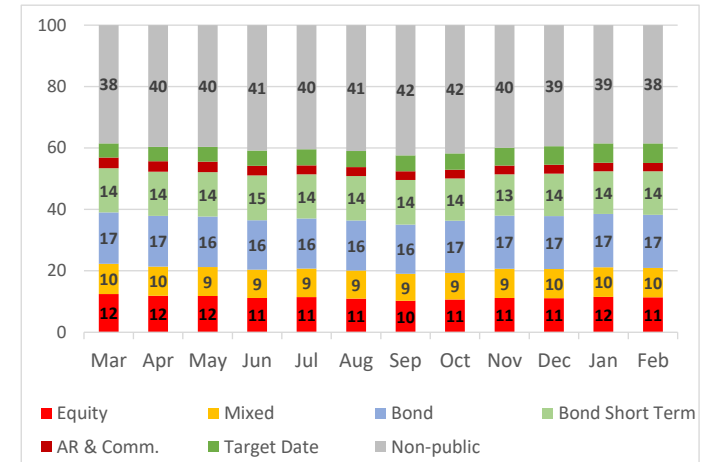


**AUM & Net Sales by Investment Profile**

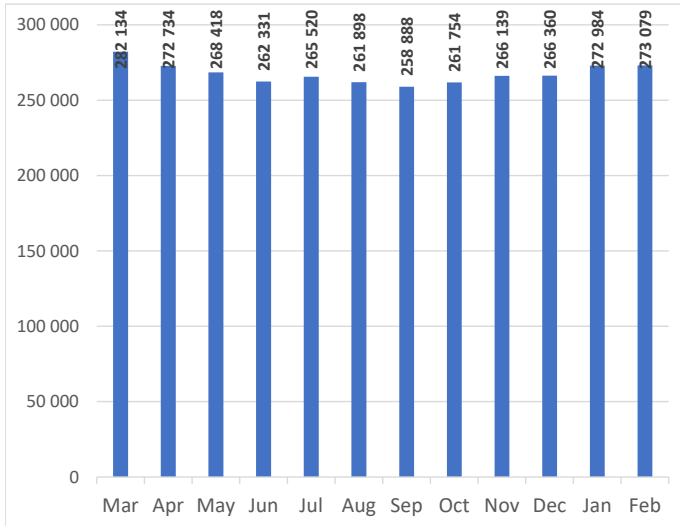
Profile	AUM		Net sales		
	Feb-23	Jan-23	Feb-23	Jan-23	YTD
Equity	31 126	31 416	-12	-2	-15
Mixed	26 188	26 457	-57	22	-35
Bond	47 115	47 273	50	165	214
Bond Short Term	38 692	37 900	607	403	1 011
Absolute Return	4 956	4 732	13	-10	3
Commodity	2 510	2 813	-104	-72	-176
Target Date PPK	11 401	11 227	299	359	658
Target Date Other	6 017	6 047	40	46	85
Non-public	105 073	105 119	10	-7	3
<b>Total</b>	<b>273 079</b>	<b>272 984</b>	<b>844</b>	<b>905</b>	<b>1 749</b>

AUM Structure [%]	Private Eq.	Securitized	Real Estate
of Non-public category	95	4	0

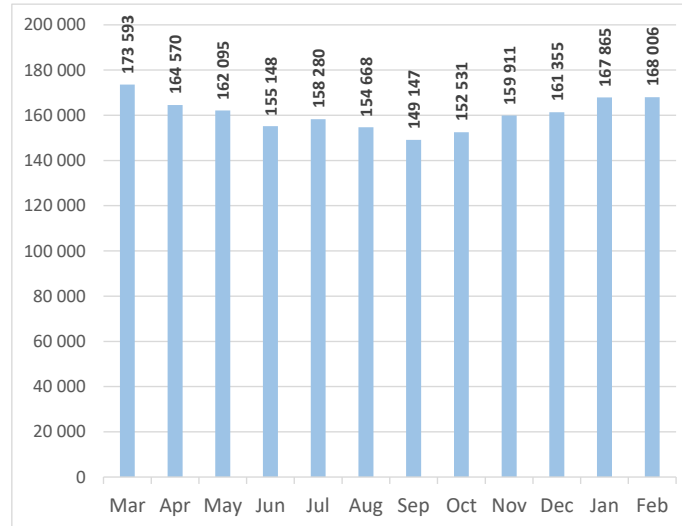
**AUM Structure [%]**



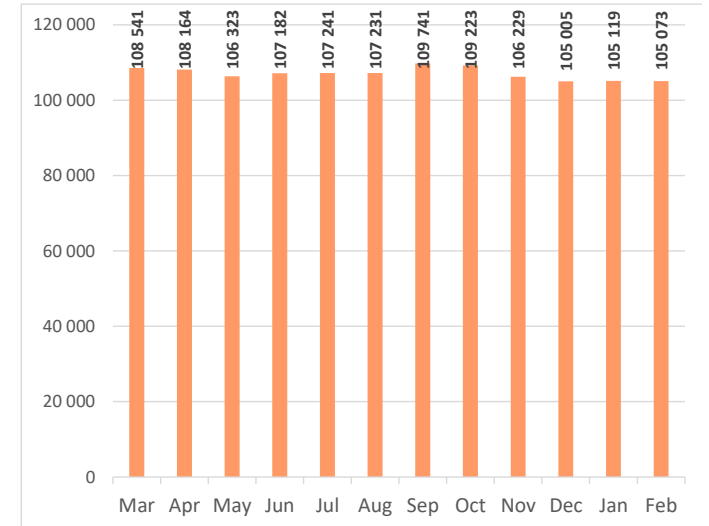
**AUM Total**



**Capital market funds AUM**



**Non-public funds AUM**

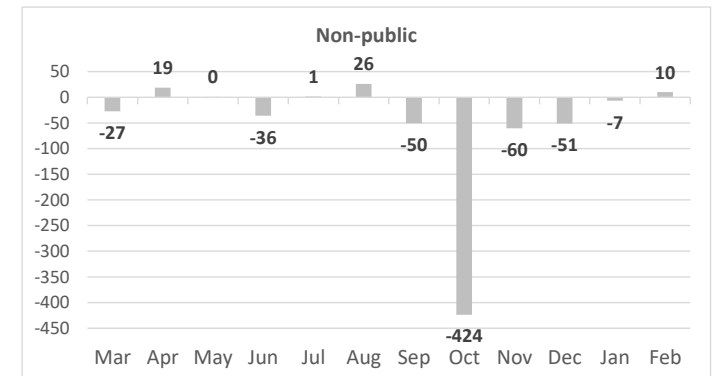
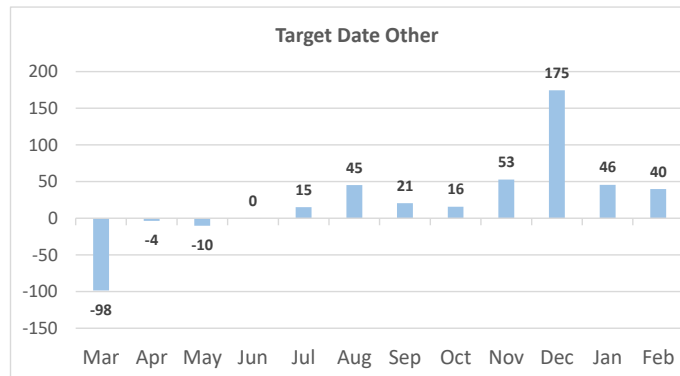
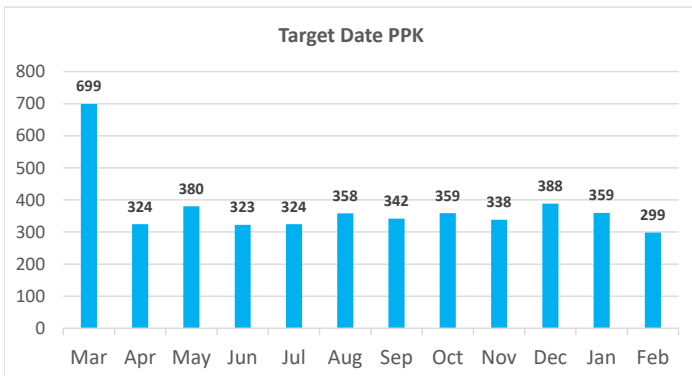
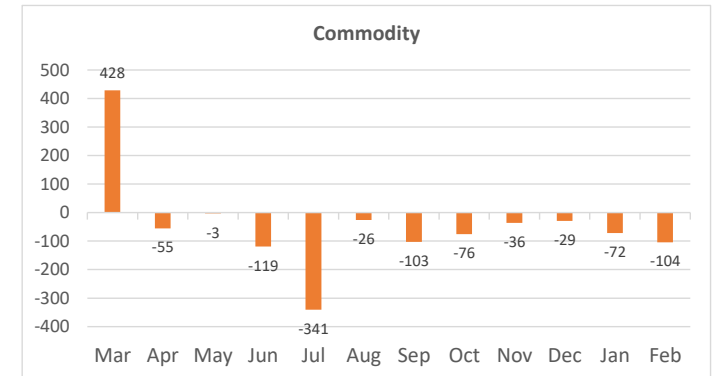
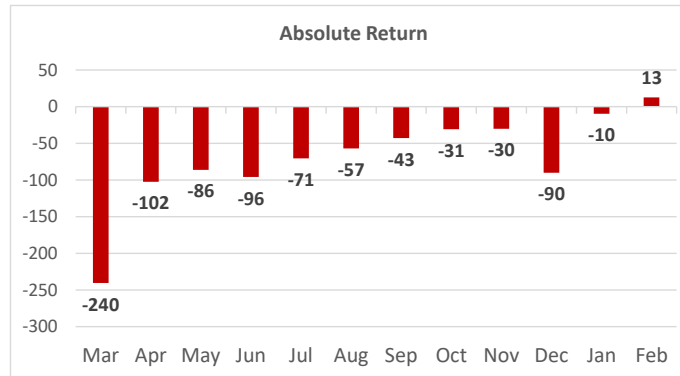
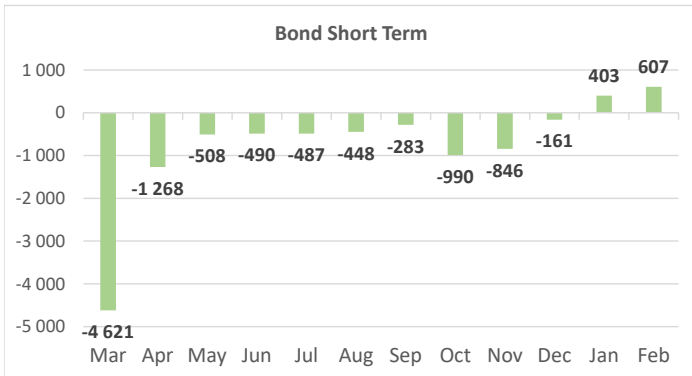
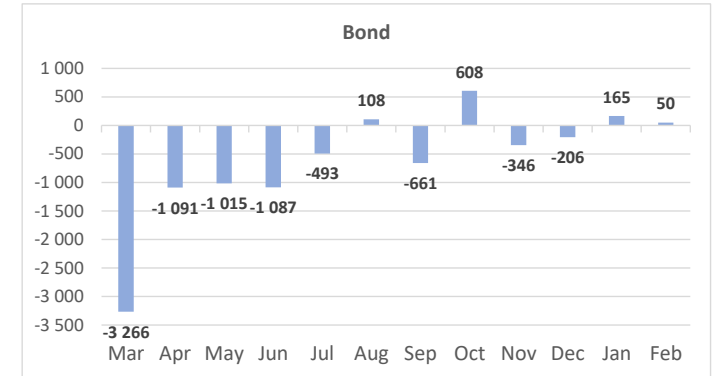
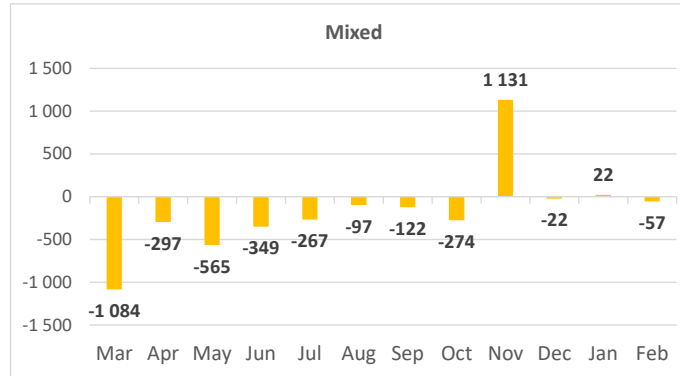
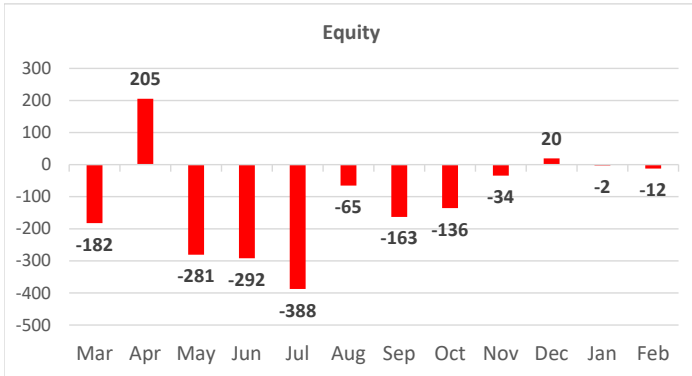


All data in PLN mln

Non-public category contains data for Private Equity, Securitized and Real Estate

This FactSheet has been developed by IZFiA, based on data collected from domestic Investment Funds (approx. 95% of Polish investment fund assets); [www.izfa.pl](http://www.izfa.pl)

Net Sales by Investment Profile



All data in PLN mln

Non-public category contains data for Private Equity, Securitized and Real Estate

This FactSheet has been developed by IZFiA, based on data collected from domestic Investment Funds (approx. 95% of Polish investment fund assets); [www.izfa.pl](http://www.izfa.pl)