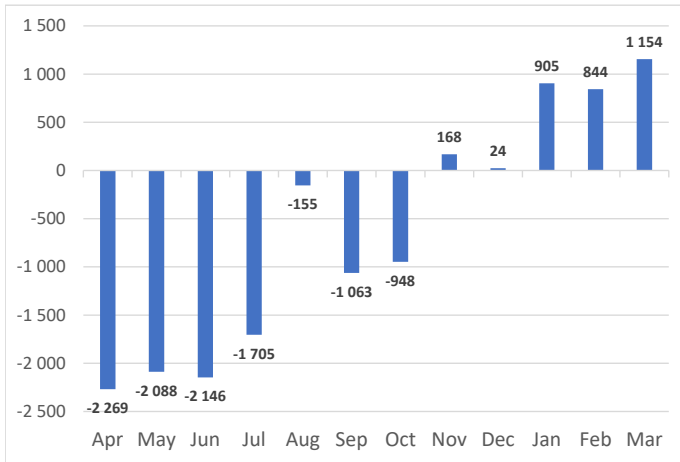


**Net Sales Total**

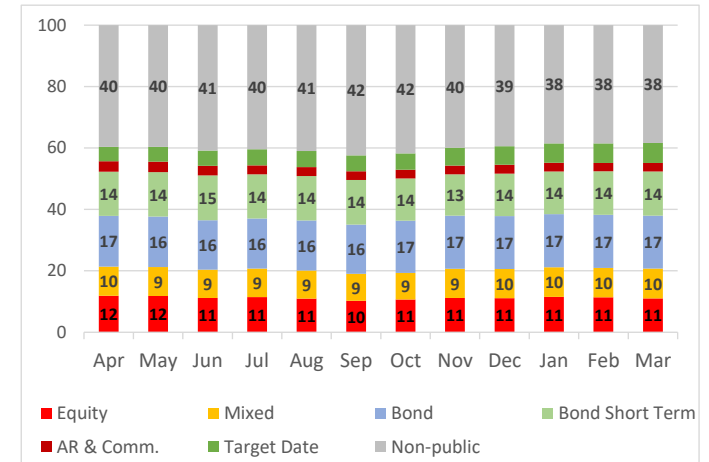


**AUM & Net Sales by Investment Profile**

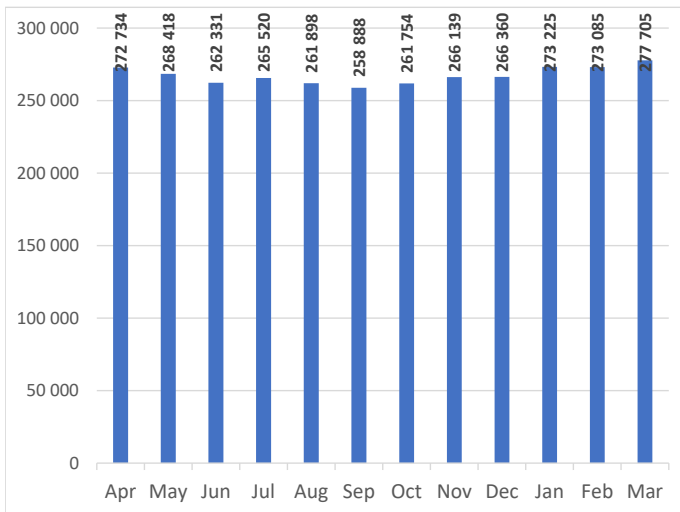
Profile	AUM		Net sales		
	Mar-23	Feb-23	Mar-23	Feb-23	YTD
Equity	30 709	31 126	-26	-12	-41
Mixed	26 997	26 189	-77	-57	-111
Bond	47 826	47 115	-93	50	122
Bond Short Term	39 877	38 692	858	607	1 869
Absolute Return	5 028	4 961	9	13	12
Commodity	2 619	2 510	-88	-104	-264
Target Date PPK	12 057	11 401	578	299	1 235
Target Date Other	6 142	6 017	42	40	127
Non-public	106 451	105 073	-48	10	-45
<b>Total</b>	<b>277 705</b>	<b>273 085</b>	<b>1 154</b>	<b>844</b>	<b>2 904</b>

AUM Structure [%]	Private Eq.	Securitized	Real Estate
of Non-public category	95	4	0

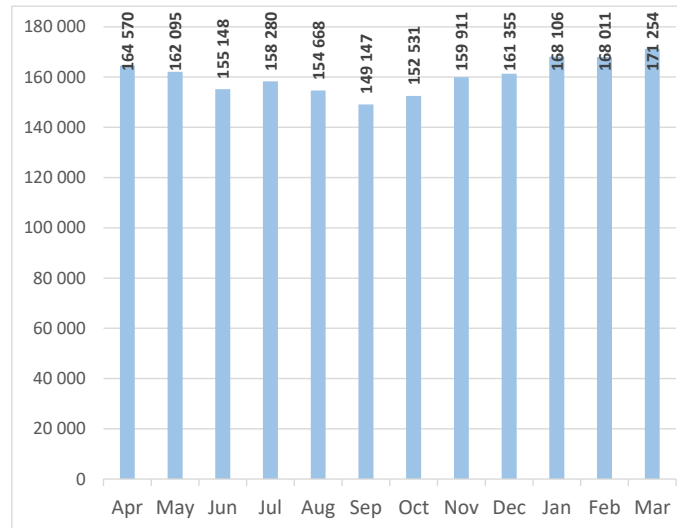
**AUM Structure [%]**



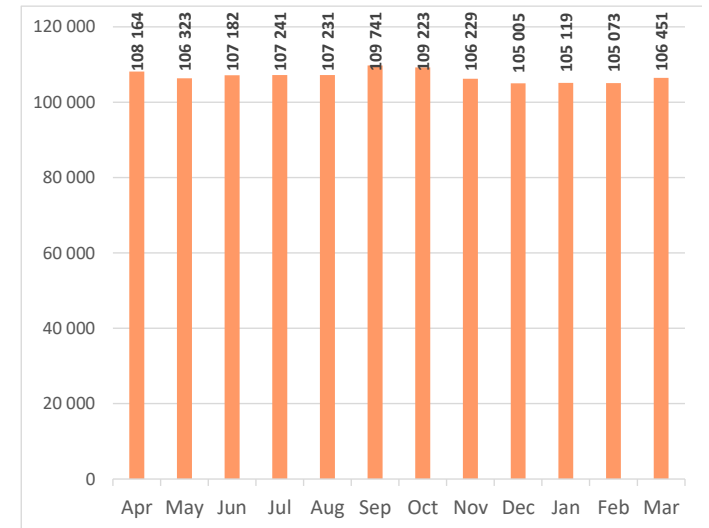
**AUM Total**



**Capital market funds AUM**



**Non-public funds AUM**

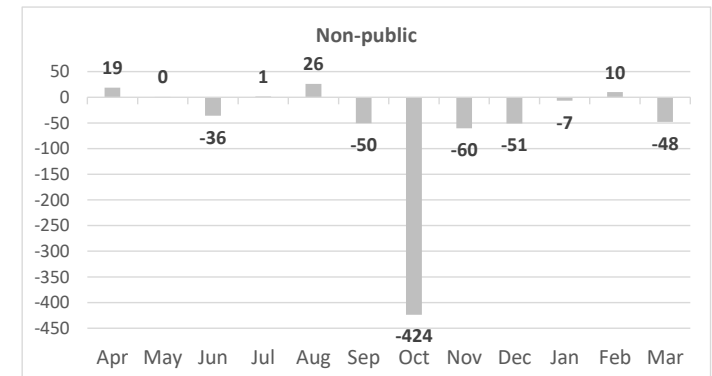
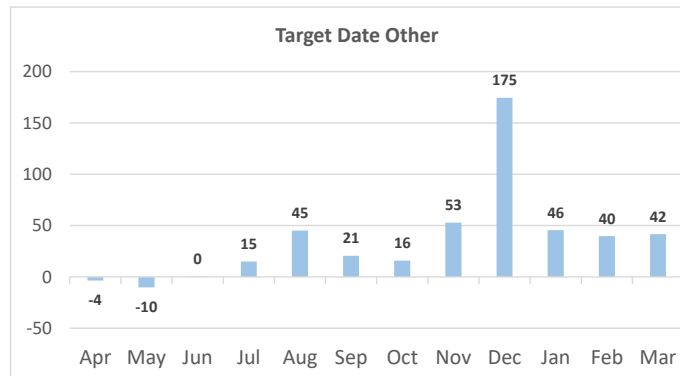
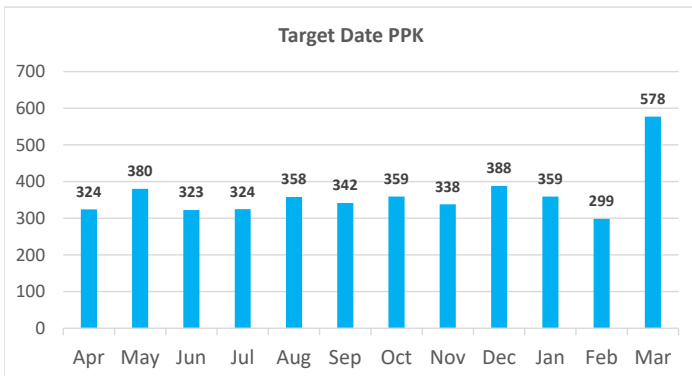
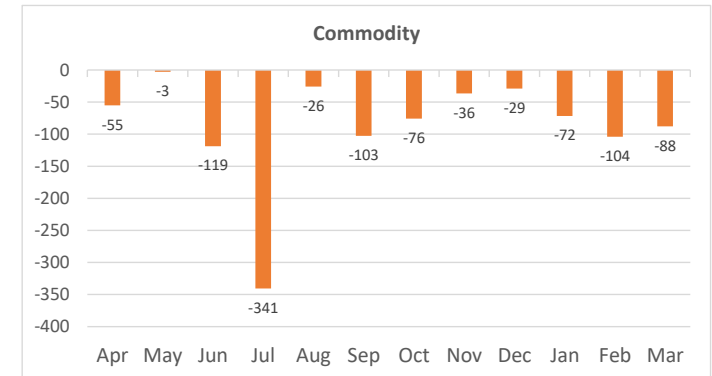
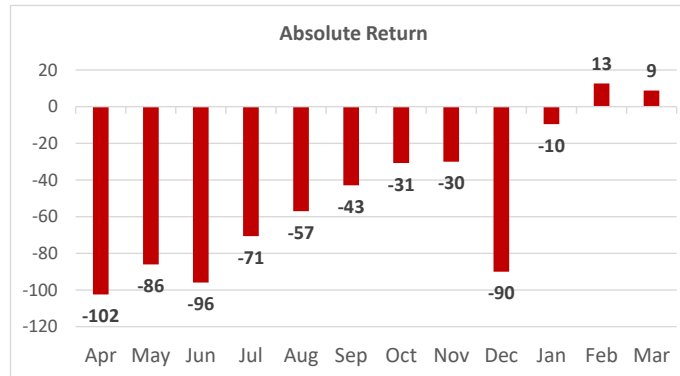
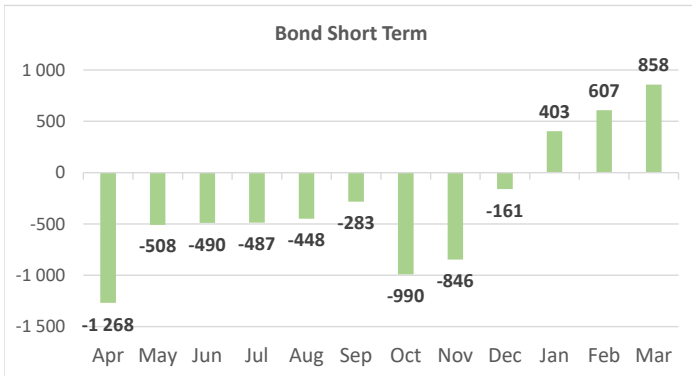
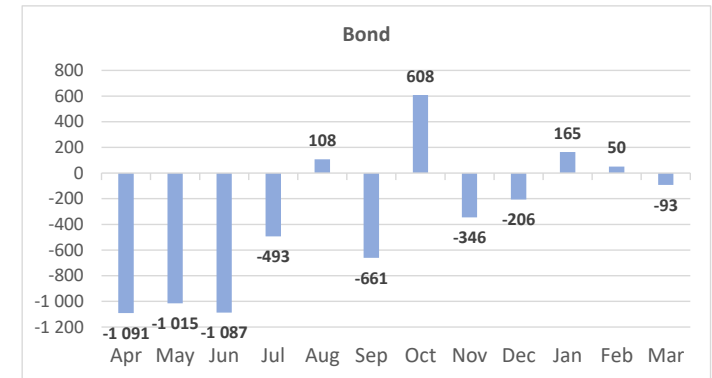
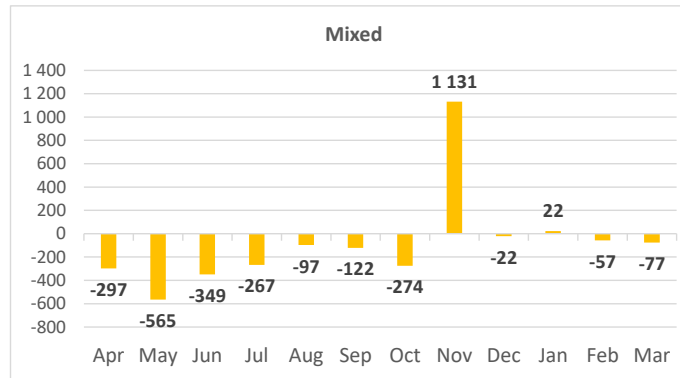
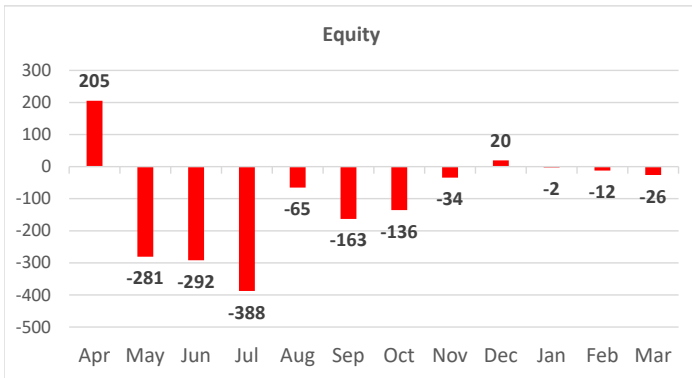


All data in PLN mln

Non-public category contains data for Private Equity, Securitized and Real Estate

This FactSheet has been developed by IZFiA, based on data collected from domestic Investment Funds (approx. 95% of Polish investment fund assets); [www.izfa.pl](http://www.izfa.pl)

Net Sales by Investment Profile



All data in PLN mln

Non-public category contains data for Private Equity, Securitized and Real Estate

This FactSheet has been developed by IZFiA, based on data collected from domestic Investment Funds (approx. 95% of Polish investment fund assets); [www.izfa.pl](http://www.izfa.pl)