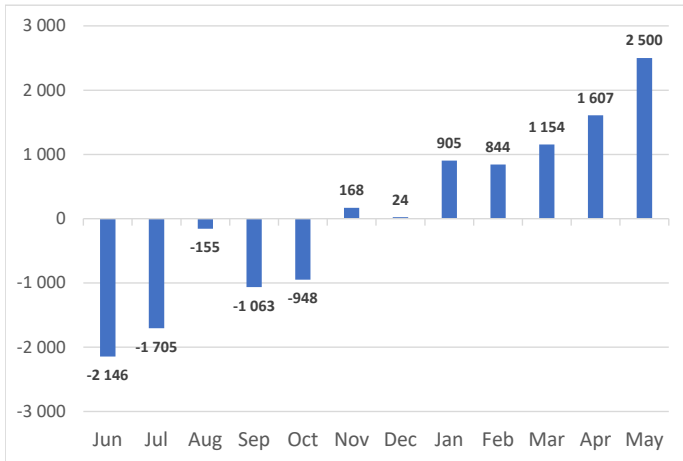


**Net Sales Total**

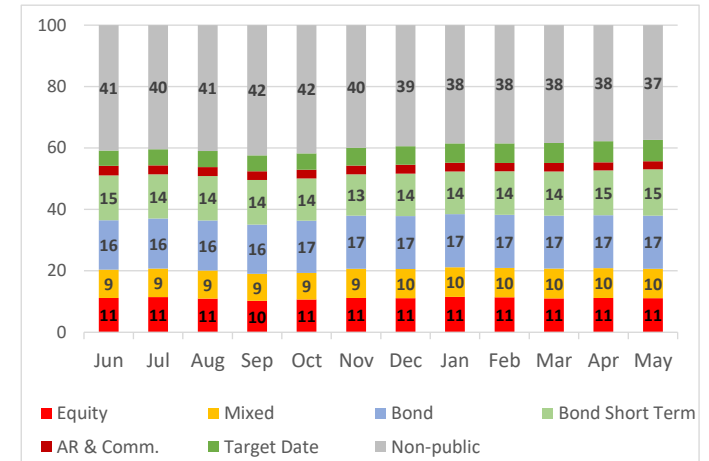


**AUM & Net Sales by Investment Profile**

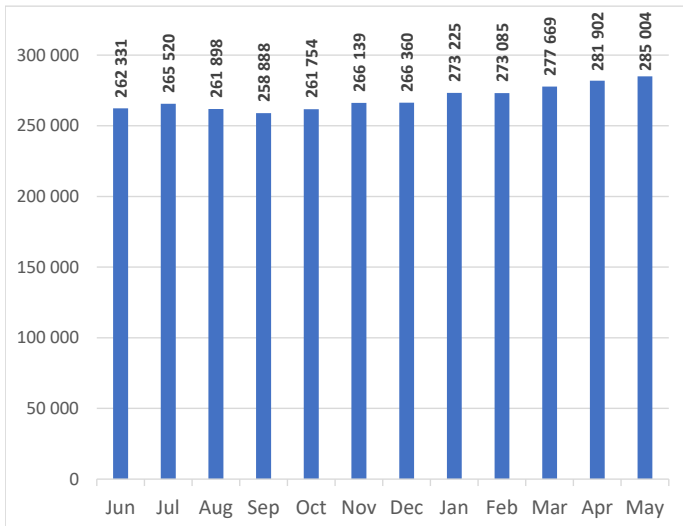
Profile	AUM		Net sales		
	May-23	Apr-23	May-23	Apr-23	YTD
Equity	31 738	31 558	-130	-162	-333
Mixed	27 114	27 282	-54	-40	-205
Bond	49 273	48 516	582	355	1 059
Bond Short Term	43 123	41 212	1 626	1 000	4 495
Absolute Return	5 071	5 001	58	41	111
Commodity	2 317	2 528	-94	-117	-475
Target Date PPK	13 452	12 977	443	451	2 130
Target Date Other	6 347	6 291	59	44	229
Non-public	106 570	106 539	10	34	-1
<b>Total</b>	<b>285 004</b>	<b>281 902</b>	<b>2 500</b>	<b>1 607</b>	<b>7 011</b>

AUM Structure [%]	Private Eq.	Securitized	Real Estate
of Non-public category	95	4	0

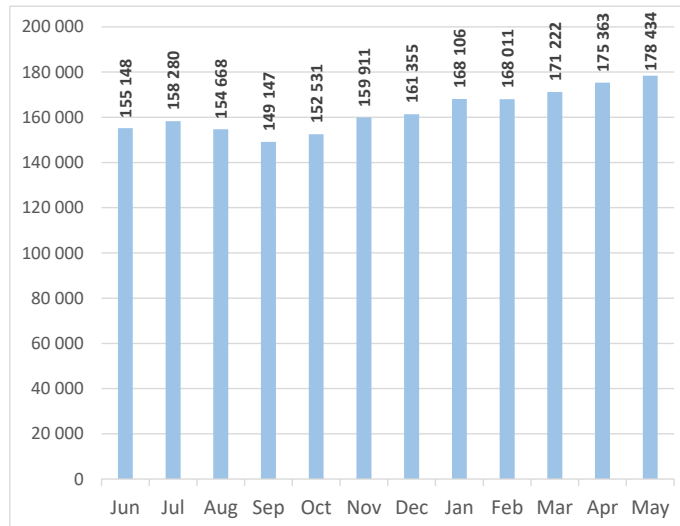
**AUM Structure [%]**



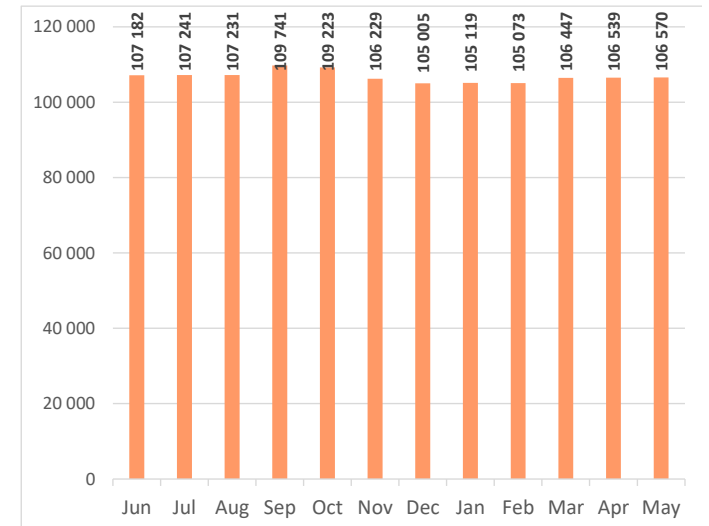
**AUM Total**



**Capital market funds AUM**



**Non-public funds AUM**

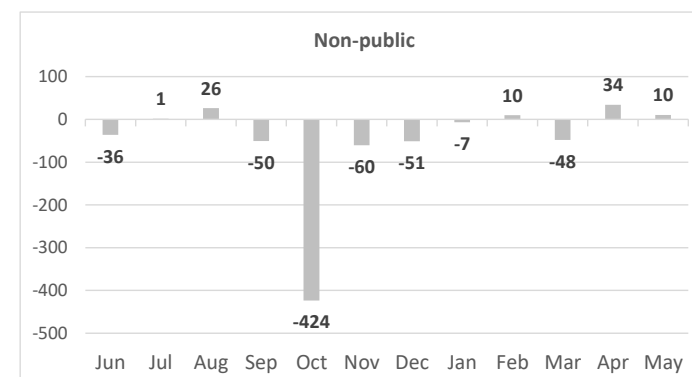
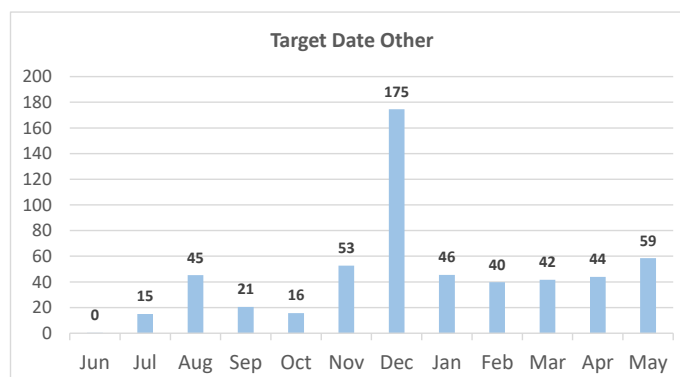
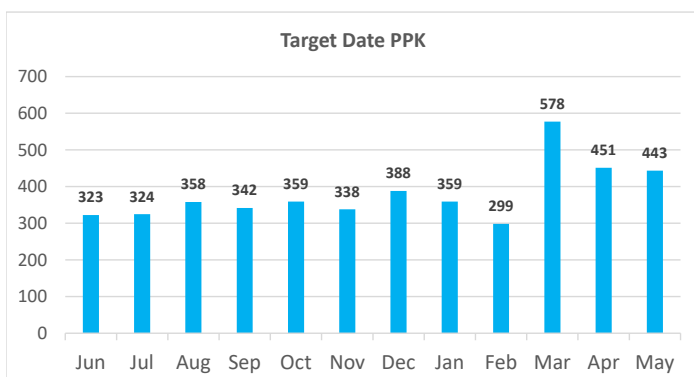
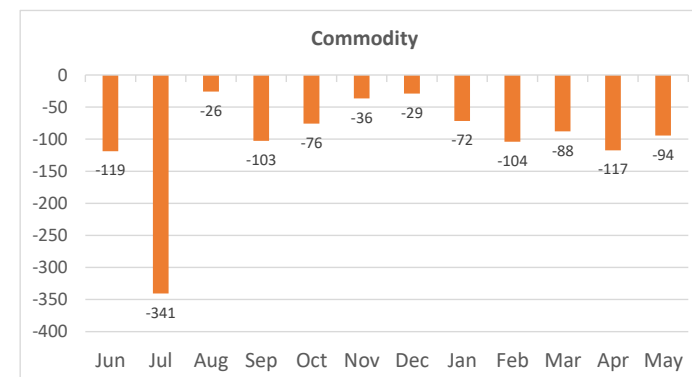
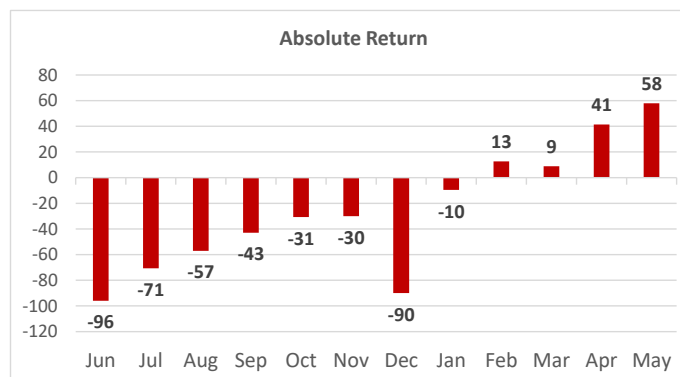
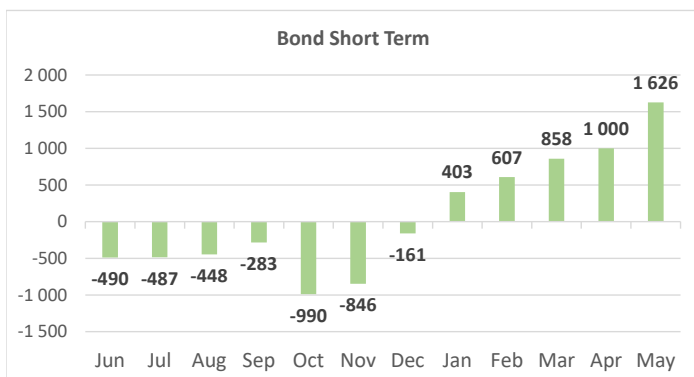
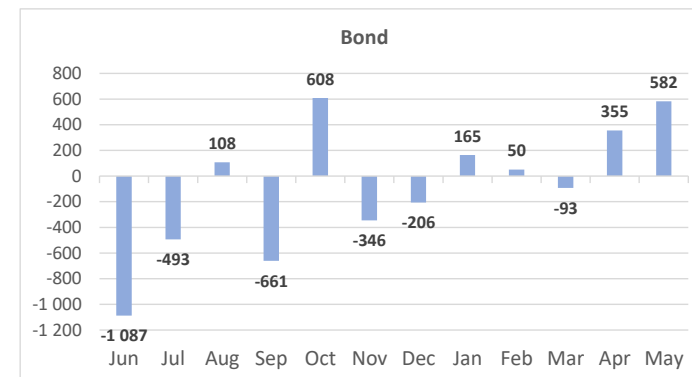
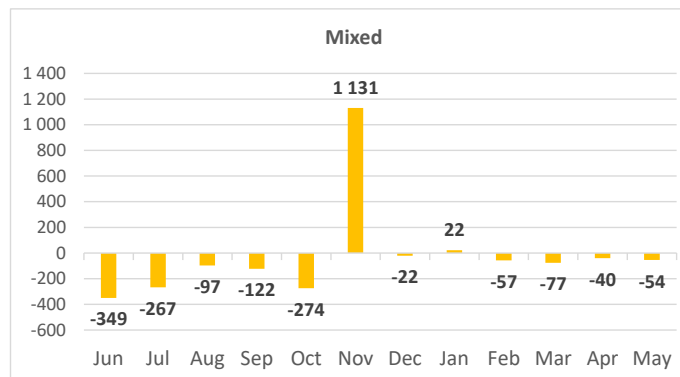
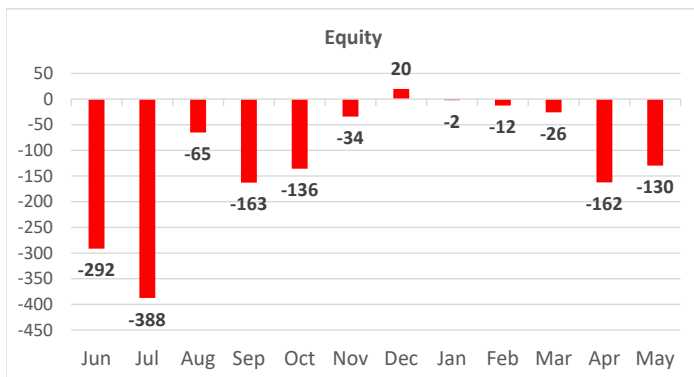


All data in PLN mln

Non-public category contains data for Private Equity, Securitized and Real Estate

This FactSheet has been developed by IZFiA, based on data collected from domestic Investment Funds (approx. 95% of Polish investment fund assets); [www.izfa.pl](http://www.izfa.pl)

Net Sales by Investment Profile



All data in PLN mln

Non-public category contains data for Private Equity, Securitized and Real Estate

This FactSheet has been developed by IZFiA, based on data collected from domestic Investment Funds (approx. 95% of Polish investment fund assets); [www.izfa.pl](http://www.izfa.pl)